

B-CELL EPITOPE PREDICTION of *Mycobacterium tuberculosis* Ag85A ANTIGEN

Ika Puspita Dewi, Faculty of Pharmacy, Universitas Jember
ika.solo@gmail.com

INTRODUCTION

Tuberculosis (TB) infection is one of the major public health problems in developing country including Indonesia. The endemic of TB infection caused by *Mycobacterium tuberculosis* became worse because of the multidrug-resistant TB (MDR-TB). *M. tuberculosis* had special feature which is its cell wall or envelope that consists of complex lipids, lipoglycans and peptidoglycans (Forrelad, 2013). The cell wall consisted of two layers, the inner and the outer. The inner consisted of peptidoglycan sacculus veiled by mycolylarabinogalactan polysaccharide layer. The outer envelope consisted of trehalose 6,6'-dimycolate (TDM; cord factor) which was synthesized by fibronectin binding protein (fbp)/ antigen 85 (Ag85) complex (Elamin, 2011).

The Ag85 complex was a 30–32 kDa protein consisting of three proteins (Ag85A, Ag85B, and Ag85C). It had several functions, including enzymatic mycolyl-transferase activity for coupling of mycolic acids to cell wall arabinogalactan, cord factor biogenesis (trehalose-dimycolate), and had capacity to bind to fibronectin and elastin of the extracellular matrix proteins (Huygen, 2014). This protein were encoded by three paralogous genes located in different regions of the bacterial genome (D'Souza, 2003). The Ag85 complex was the major secreted protein of *M. tuberculosis* cell culture besides of its association with bacterial surface. It had essential role in the pathogenesis of tuberculosis. The ability of this protein to bind fibronectin promoted *M. tuberculosis* adhesion to the mucosal surface, thus facilitating the bacteria to entry into the host cell. However, the main role of it to the virulence of *M. tuberculosis* was the ability to synthesis of cell wall lipids (Forrelad, 2013).

Ag85A (fbpA) was part of the antigen 85 complex. It had several functions including as the triacylglycerol synthase and might have the key role in stability of cell wall and storage compounds biosynthetic for the survival of *M. tuberculosis* during the dormant state (Elamin, 2011). Belisle et al. (1997) studied the role of Fpb proteins in the virulence of mycobacteria using *M. tuberculosis* H37Rv fbpA mutant and suggest that the Ag85A (fbpA) would be essential in the virulence of *M. tuberculosis*. The study by Elamin et al (2011) had

the same result that Ag85A might be the key player for formation of lipid storage bodies and thus also essential for the establishment and maintenance of a persistent tuberculosis infection.

Ag85A and Ag85B are among the most promising tuberculosis vaccine candidates because their ability to induces T-cell response and production of IFN- γ (Huygen, 2014). The T-cells epitopes of the Ag85A have been identified. (Ivanyi, 2014). The B-cell epitope of Ag85A have rarely investigated. Thus, this study is aimed to predict the B-cell epitope of Ag85A. The result of this study will be useful for investigation of the immunogenicity and antigenicity of Ag85A antigen.

METHOD

Amino acid sequence of Ag85A antigen which had 338 amino acid length (form <http://tuberculist.epfl.ch/>) was analyzed using B-cells Tools from IEDB online prediction software (<http://tools.iedb.org/main/bcell/>).

The software analyze amino acid scale using six methods, such as Chou & Fasman BetaTurn Prediction, Emini Surface Accessibility, Karplus & Schulz Flexibility Prediction, Kolaskar & Tongaonkar Antigenicity Prediction, Bepipred Linear Epitope Prediction, and Parker Hydrophilicity Prediction. Each method worked by its characteristic as described below according to <http://tools.iedb.org/main/bcell/> :

Chou & Fasman BetaTurn Prediction using Chou-Fasman algorithm predicted beta turns of a protein which is known for the immunodominant region of a protein. This area were shown by the region above threshold.

Emini Surface Accessibility Prediction is used to know the surface accessibility of a protein. The method calculated based on scale of surface accessibility on a protein. The formula for the calculation to get the profile is $S_n = (n+4+i) \cdot (0.37)^{d_n}$; S_n is the surface probability, d_n is the fractional surface probability value, and i vary from 1 to 6. The profile has S_n greater than 1.0 have bigger probability for being found on the surface.

Karplus & Schulz Flexibility Prediction is used to predict the most antigenic protein based on flexibility scale. The scale calculation is based on mobility of protein segments. This method

calculation based on mobility of 31 proteins alpha-carbon on the basis of the known temperature B factors.

Kolaskar & Tongaonkar Antigenicity Prediction is used to predict antigenic determinants on proteins. This method used the physicochemical characterization of amino acid and their experimentally occurrence frequencies in known segmental epitopes. This method can be applied to proteins with accuracy about 75% better than the other method.

Bepipred Linear Epitope Prediction is used to predicts the location of linear B-cell epitopes using a combination of a hidden Markov model and a propensity scale method. Amino acid residues have score more than the threshold are predicted to be epitope.

Parker Hydrophilicity Prediction is used to predict linear epitope using hydrophilicity of amino acid residues. Hydrophilicity of amino acid based on retention times of a peptide on high performance liquid chromatography (HPLC) on a reversed phase column. The epitope region was determined by analyzing a window of seven residues amino acid.

RESULT

The Ag85A consisted of 338 amino acid as listed below

MQLVDRVRGAVTGMSRRLVVGAVGAALVSLVAVG
GTATAGAFSRPGLPVEYLQVSPSMGRDIKVFQSGGA
NSPALYLLDGLRAQDDFSGWDINTPAFEWYDQSGLSV
VMPVGGQSSFYSDWYQPACGKAGCQTYKWETFLTSEL
PGWLQANRHKPTGSAAVGLSMAASSALTLAIYHPQQ
FVYAGAMSGLLDPSQAMGPTLIGLAMGDAGGYKASD
MWGPKEDPAWQRNDPLLNVGKLIANNTRVWVYCGN
GKPSDLGGNNLPAKFLEGFVRTSNIKFQDAYNAGGGH
NGVDFPDSGTHSWEYWGAQLNAMKPDQLRALGATP
NTGPAPQGA

Chou & Fasman Beta Turn Prediction

Chou and Fasman beta turn prediction gave 10 epitopes of B cell with a minimum propensity score of 0.724, maximum score of 1.443 and threshold of 1.045.

Emini Surface Accessibility Prediction

Emini Surface Accessibility to predict beta turn has resulted 9 beta turns of Ag85A protein with a minimum propensity score of 0.094, maximum score of 4.112 and threshold of 1.

Karplus & Schulz Flexibility Prediction

Karplus & Schulz Flexibility Prediction gave 15 epitopes of Ag85A protein with a minimum propensity score of 0.891, maximum score of 1.104 and threshold of 0.999.

Kolaskar & Tongaonkar Antigenicity Prediction

Kolaskar & Tongaonkar Method to predict antigenicity of Ag85A protein has resulted 10 epitopes with a minimum propensity score of 0.901, maximum score of 1.186 and threshold of 1.023.

Bepipred Linear Epitope Prediction

Bepipred to predict linear epitope has resulted 11 antigenic determinant of Ag85A protein with a minimum propensity score of -1.143, maximum score of 2.632 and threshold of 0.38.

Parker Hydrophilicity Prediction

Parker Hydrophilicity Prediction gave 15 epitopes of B cell with a minimum propensity score of -3.826, maximum score of 6.100 and threshold of 1.523.

B Cell Epitopes Analysis

The analysis from six methods showed that Ag85A has six B-cell epitopes. These epitopes located at 83-99, 113-124, 155-167, 223-236, 252-267, 298-308 amino acid residues or nearby.

Table 1. B-cell epitope prediction

Amino acid position	Length	Sequence
83-99	17	DGLRAQDDFSGWDINTP
113-124	12	MPVGGQSSFYSD
155-167	13	NRHVKPTGSAAVVG
223-236	14	WGPKEDPAWQRNDP
252-267	16	VYCGNGKPSDLGGNNL
298-308	11	DFPDSGTHSWE

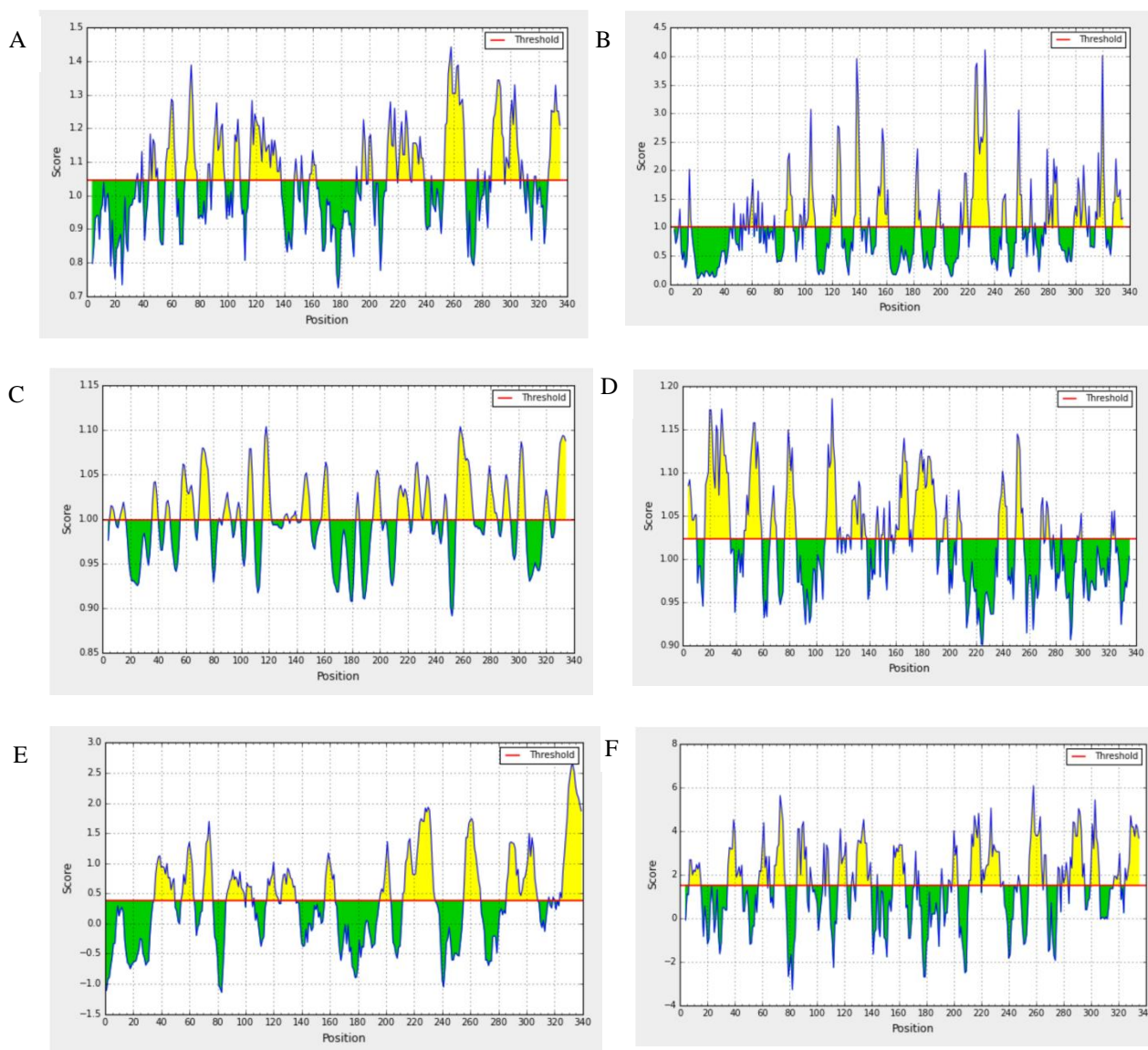


Figure 1. The B cell epitope prediction. A. Chou & Fasman Beta Turn Prediction (threshold: 1.045), B. Emini Surface Accessibility Prediction (threshold : 1.000), C. Karplus & Schulz Flexibility Prediction (threshold : 0.999), D. Kolaskar & Tongaonkar Antigenicity Prediction (threshold : 1.023), E. Bepipred Linear Epitope Prediction (threshold : 0.38), F. Parker Hydrophilicity Prediction (threshold : 1.523).

Notes: the x- and y-axes represent the sequence position and antigenic propensity score, respectively. The regions above the threshold are antigenic, shown in yellow

DISCUSSION

Ag85A is known for inducing T-cell response and production of IFN- γ (Huygen, 2014). The B cell immune epitope prediction by IEDB online software gave six potential B cell epitopes by six different methods calculation. Chou-Fasman algorithm predicted beta turns of a protein of Ag85A. Beta turns are the non-repetitive structure of a protein. The important of beta turns as it used for protein folding, stability of protein, and molecular recognition. A protein sequence with beta turns known as the anti-peptide antibody and used for presentation of protein in B cell epitopes thus induced antibody production. Immunogenic

determinants that can induce protein-reactive anti-peptide antibodies reside mostly in those parts of the molecule that have a high tendency to form beta-turns (Krchnák et al, 1987). The Emini access found surface accessibility of Ag85A. Those surfaces could be accessed by antibody. Karplus & Schulz Flexibility Prediction and Kolaskar & Tongaonkar Antigenicity Prediction predicted the most antigenic part of protein with different approach. Bepipred Linear Epitope Prediction calculated the location of linear B-cell epitopes. Parker Hydrophilicity Prediction finding hydrophilicity part of Ag85A. The hydrophilicity of a protein was known as antigenic

(National Institute of Allergy and Infectious Diseases, 2015). Overall, the result showed that Ag85A could act as antigen to induce antibody production by B cell besides cellular immunity and cytokine production in human. Giri et al (2006) studied Ag85A along with Ag85B as the potential vaccine candidate using BALB-C mice given by intranasal. The result showed that Ag85A native antigen could induces the production of IFN- γ , IL-12, IL-4, IgA, and IgG in murine. This research has similar result to epitope prediction of Ag85A in human.

Antibody responses were essential against mycobacterial infection, and the synergy and mutual interdependence between humoral immunity and cell-mediated immunity is needed for this action. Antibody (Abebe and Bjune, 2009). B cell major role

in in tuberculosis infection was to produce antibody. The antibody could do its function against pathogen such as neutralization, opsonization, antibody dependent cell cytotoxicity, and complement activation. Besides that, B lymphocytes modulate the host response in tuberculosis infection. B cells developed anti-tuberculous immunity through a variety mechanism including antigen presentation, cytokine production, and influencing leukocytes intracellular killing mechanisms (Maglione and Chan, 2009).

CONCLUSION

Ag85A has potential B cell epitopes to induce antibody production in human thus Ag85A could be developed as vaccine antigen of tuberculosis.

REFERENCES

1. Abebe F and Bjune G. The protective role of antibody responses during *Mycobacterium tuberculosis* infection *Clin Exp Immunol*, **157**: 235–243 (2009).
2. Belisle JT, Vissa VD, Sievert T, Takayama K, Brennan PJ, Besra GS. Role of the major antigen of *Mycobacterium tuberculosis* in cell wall biogenesis. *Science*. 276:1420-2 (1997).
3. D'Souza S, Rosseels V, Romano M, Tanghe A, Denis O, Jurion F, et al. Mapping of Murine Th1 Helper T-Cell Epitopes of Mycolyl Transferases Ag85A, Ag85B, and Ag85C from *Mycobacterium tuberculosis*. *INFECT. IMMUN.* Vol. 71, No. 1 (2003).
4. Elamin AA, Stehr M, Spallek R, Rohde M and Singh M. The *Mycobacterium tuberculosis* Ag85A is a novel diacylglycerol acyltransferase involved in lipid body formation. *Molecular Microbiology* 81(6), 1577–1592 (2011).
5. Forrellad MA., Klepp Ll., Gioffre A., Garcia JS., Morbidoni HR., de la Paz Santangelo M., et al. Virulence factors of the *Mycobacterium tuberculosis* complex. *Virulence*.4(1):3-66 (2013).
6. Giri PK, Verma I, Khuller GK. Enhanced immunoprotective potential of *Mycobacterium* Ag85 complex protein based vaccine against airway *Mycobacterium tuberculosis* challenge following intranasal administration. *FEMS Immunol Med Microbiol*. **47**:233–41 (2006).
7. Huygen K. The immunodominant T-cell epitopes of the mycolyl-transferases of the antigen 85 complex of *M. tuberculosis*. *Front Immunol*. 5:321 (2014).
8. Ivanyi J. Function and potentials of *M. tuberculosis* epitope. *Frontiers in Immunology*. 5 : 107 (2014).
9. Krchnák v, Mach o, Malý A. computer prediction of potential immunogenic determinants from protein amino acid sequence. *Anal Biochem*. 165(1):200-7 (1987).
10. Maglione PJ and Chan J. How B cells Shape the Immune Response against *Mycobacterium tuberculosis*. *Eur J Immunol*. 39(3): 676–686 (2009).
11. National Institute of Allergy and Infectious Diseases. Antibody Epitope Prediction. From <http://tools.iedb.org/main/bcell/> accessed November 2015.
12. Zang F., Lu X., Guo N., Zhang Y., Ji P., HU J. et al. The Prediction of T- and B-combined epitope of Ag85B antigen of *Mycobacterium tuberculosis*. *Int. J. Clin Exp Med*. 9(2):1408-21(2016)