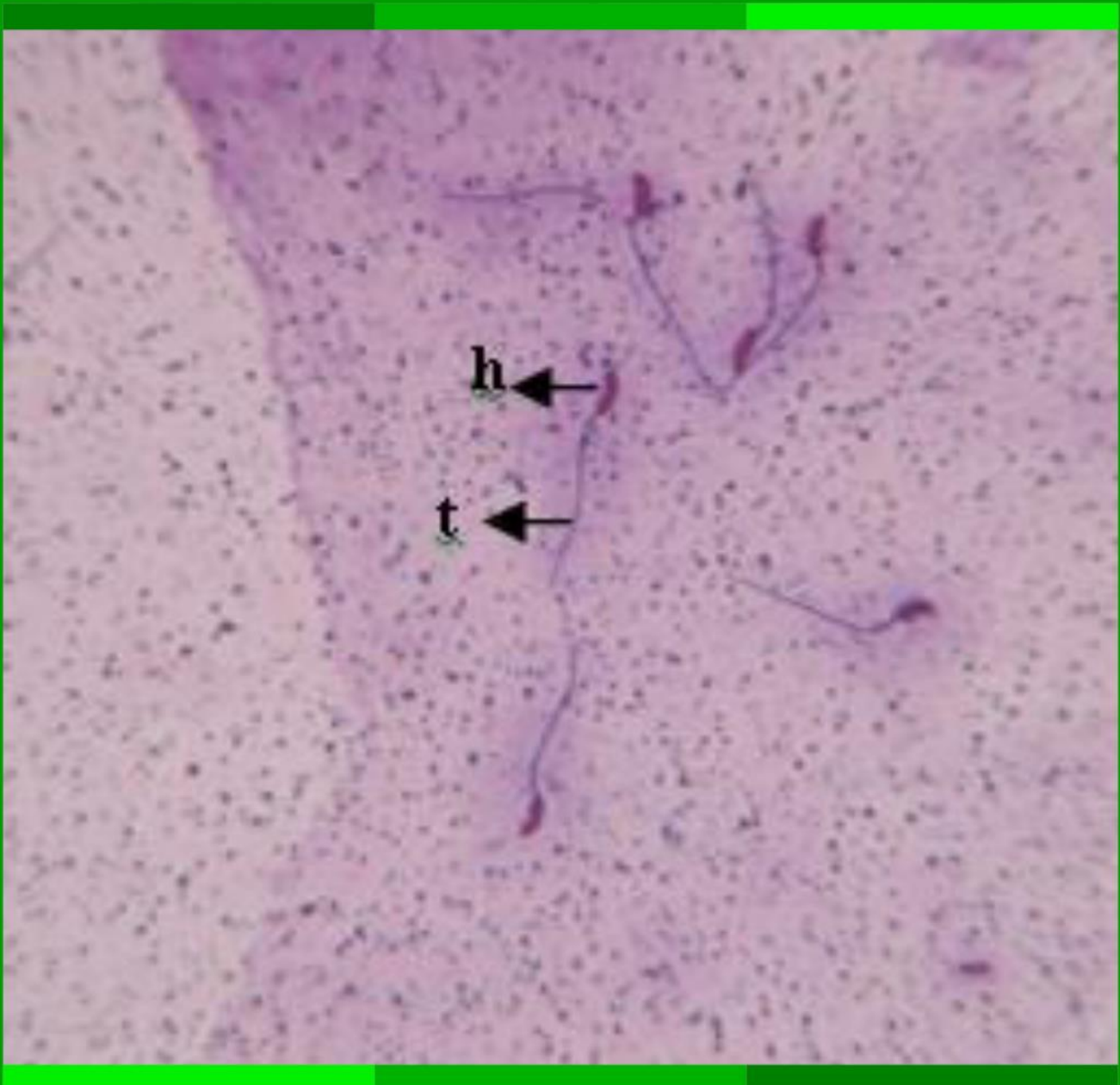




# BIOEDUKASI

Jurnal Biologi dan Pembelajarannya



Published by  
Study Program of Biology Education  
Faculty of Teacher Training and Education  
Universitas Jember

**BIOEDUKASI**  
**Jurnal Biologi dan Pembelajarannya**

A year published three times in February, June and October, contains scientific papers on the biology of both educational and non-educational research, and critical analytical studies of biology and learning.

**EDITOR IN CHIEF:**

Assist. Prof. Bevo Wahono, Ph.D. (University of Jember, Indonesia)

**EDITORIAL BOARD:**

Assoc. Prof. Erlia Narulita, Ph.D. (University of Jember, Indonesia)

Prof. Chun Yen Chang, Ph.D. (National Taiwan Normal University, Taiwan)

Prof. Hyunju Lee, Ph.D. (Ewha Womans University, Korea)

Assist. Prof. Anita Schuchardt, Ph.D. (University of Minnesota, United State of America)

Assoc. Prof. Dr. Ir. Imam Mudakir, M.Si. (University of Jember, Indonesia)

Assoc. Prof. M. Abd. Hadi Bunyamin, Ph.D. (Universiti Teknologi Malaysia, Malaysia)

Assoc. Prof. Nguyen Van Hien, Ph.D. (Hanoi National University of Education, Vietnam)

Ping-Han Cheng, Ph.D. (National Taiwan Normal University, Taiwan)

José A. M. Bravo, Ph.D. (Universidad Pedagógica y Tecnológica de Colombia, Colombia)

Siti Murdiyah, S.Pd., M.Pd. (University of Jember, Indonesia)

Ika Lia Novenda, S.Pd., M.Pd. (University of Jember, Indonesia)

Vendi Eko Susilo, S.Pd., M.Si. (University of Jember, Indonesia)

**LAYOUTING EDITOR:**

Ervan Prasetyo, S.Pd., MOS., MCE. (University of Jember, Indonesia)

Prasetyo Wibowo, S.Pd. (University of Jember, Indonesia)

**EDITOR ADDRESS:**

Study Program of Biology Education

Faculty of Teacher Training and Education

University of Jember

Jl. Kalimantan No. 37 Kampus Bumi Tegal Boto

Jember 68121 East Java, Indonesia

Telp. + 62 0331 334 988

E-mail: [bioedukasi@unej.ac.id](mailto:bioedukasi@unej.ac.id)

# BIOEDUKASI

Jurnal Biologi dan Pembelajarannya

MOLECULAR CHARACTERIZATION OF <i>Piper retrofractum</i> Vahl IN JAVA USING INTER SIMPLE SEQUENCE REPEATS (ISSR) MARKERS <b>Sulifah A. Hariani, Siti Zubaidah</b>	1-7
BIODIVERSITY OF FISH FAMILY OSPHRONEMIDAE IN SWAMP WATERS IN BAGAN BILAH VILLAGE, DISTRICT OF PANAI TENGAH LABUHANBATU REGENCY <b>Khairul, Yayuk Astriani</b>	8-12
EPIDERMAL CHARACTERISTICS AND EPIDERMAL DERIVATIVES OF THE LEAVES OF <i>Ipomoea pes-caprae</i> (L.) R. Br. IN THE DEPOK BEACH AREA OF YOGYAKARTA <b>Zuchrotus Salamah, Hadi Sasongko, Lina Radhita Vebriyani</b>	13-20
ANTIOXIDANT ACTIVITY, TOTAL PHENOLIC CONTENT, AND FTIR ANALYSIS OF FERMENTED BADUY HONEY WITH PINEAPPLE <b>Adri Nora, Anjas Wilapangga, Amenia Kahfi, Meisya Then, Atikah Fairus</b>	21-25
PHYTOREMEDIATION POTENTIAL OF <i>Salvinia molesta</i> FOR ORGANIC MATTER COFFEE LIQUID WASTE <b>Maria Ulfah, Syafina Nurussalma, Ipah Budi Minarti</b>	26-30
MORPHOLOGICAL CHARACTERIZATION OF PLANTAIN SQUIRREL ( <i>Callosciurus notatus</i> ) SPERM <b>Muhammatul Umami</b>	31-35
COLOR BLIND PREVALENCE OF ELEMENTARY STUDENT IN SUMBERSARI SUBDISTRICT, JEMBER <b>Rike Oktarianti, Lutfia Azizah, Eva Tyas Utami</b>	36-41
EFFECT OF FEED COMPOSITION ON SPONSTIC PLASTIC WASTE DEGRADATION, SURVIVALITY AND LARVA GROWTH <i>Tenebrio molitor</i> L. <b>Wachju Subchan, Dwi Wahyuni, Sugeng Winarso, Lintang Mutiara Putri</b>	42-48
USING <i>sma-its2</i> PRIMER FOR ITS2 ( <i>Internal Transcribed Spacer-2</i> )-BASED MOLECULAR CHARACTERIZATION OF <i>Anopheles minimus</i> FROM KULONPROGO, YOGYAKARTA - INDONESIA <b>Kartika Senjarini, Berlian Permata Dewi Erlambang, Naura Paramitha Cindy Ardyah, Devi Astikaningrum, Rike Oktarianti, Syubbanul Wathon</b>	49-56
OPTIMIZATION OF <i>REAL-TIME</i> PCR CONDITIONS FOR COVID-19 DIAGNOSIS WITH LOGIX SMART REAGENT™ <b>Henny Saraswati, Anisa Febriyanti, Seprianto, Febriana Dwi Wahyuni, Oktaviani Naulita Turnip, Roslein Putri, Titta Novianti</b>	57-63